



TEACHING with PRIMARY SOURCES

Analyzing Maps



Learning Objectives

Participants will:

- Observe a primary source analysis;
- Analyze a primary source; and,
- Develop instructional strategies to help students examine and analyze primary sources

3

TEACHING
with PRIMARY
SOURCES

PRIMARY SOURCE ANALYSIS TOOL



OBSERVE

REFLECT

QUESTION

FURTHER INVESTIGATION

TEACHER'S GUIDE
ANALYZING MAPS

Guide students with the sample questions as they respond to the primary source. Encourage them to go back and forth between the columns; there is no correct order.

OBSERVE
Ask students to identify and note details.
Sample Questions:
Describe what you see. - What do you notice first?
- What size and shape is the map? - What graphical elements do you see? - What on the map looks strange or unfamiliar? - Describe anything that looks like it does not belong on a map. - What place or places does the map show? - What, if any, words do you see?

REFLECT
Encourage students to generate and test hypotheses about the source.
Why do you think this map was made? - Who do you think the audience was for this map? - How do you think this map was made? - How does it compare to current maps of this place? - What does this map tell you about what the people who made it knew and what they didn't? - If this map was made today, what would be different? - What would be the same?

QUESTION
Invite students to ask questions that lead to more observations and reflections.
What do you wonder about...
who? - what? - when? - where? - why? - how?

FURTHER INVESTIGATION
Help students to identify questions appropriate for further investigation, and to develop a research strategy for finding answers.
Sample Question: What more do you want to know, and how can you find out?

A few follow-up activity ideas:

Beginning
Have students write a brief description of the map in their own words.

Advanced
Search for maps of a city or state from different time periods, then compare a lot of changes over time and other differences and similarities between the maps.

Intermediate
Study three or more maps of a city or state at different time periods. Arrange them in chronological order. Discuss clues to the correct sequence.

For more tips on using primary sources, go to <http://www.loc.gov/teachers>

© 2012 by the Library of Congress

Sample Analysis

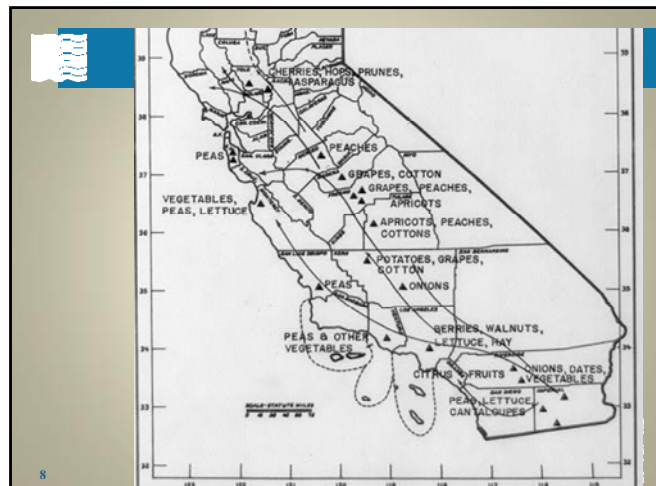
Look closely at your map section:

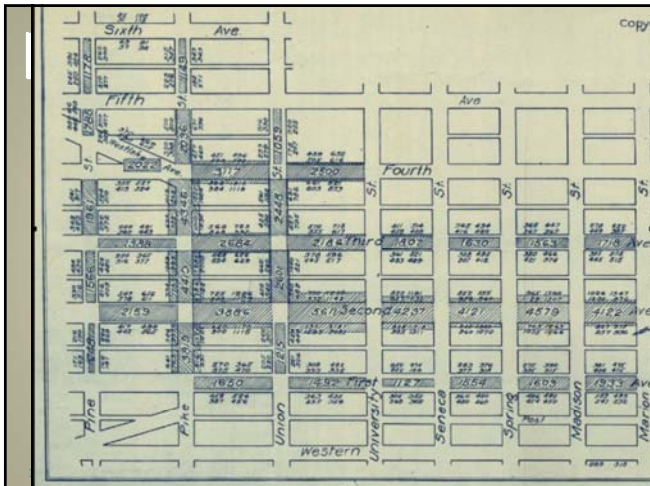
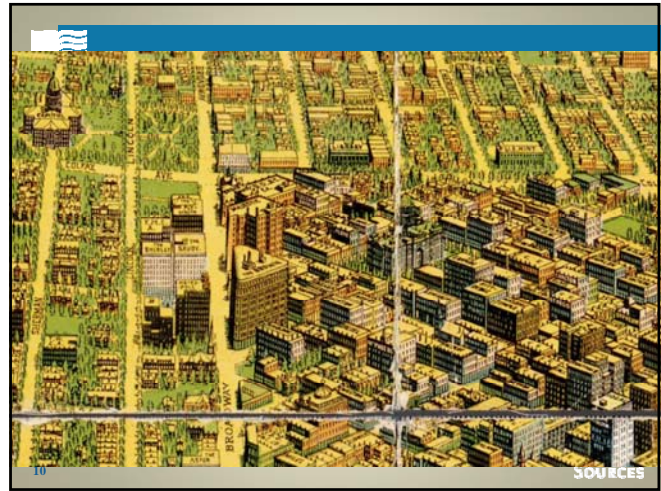
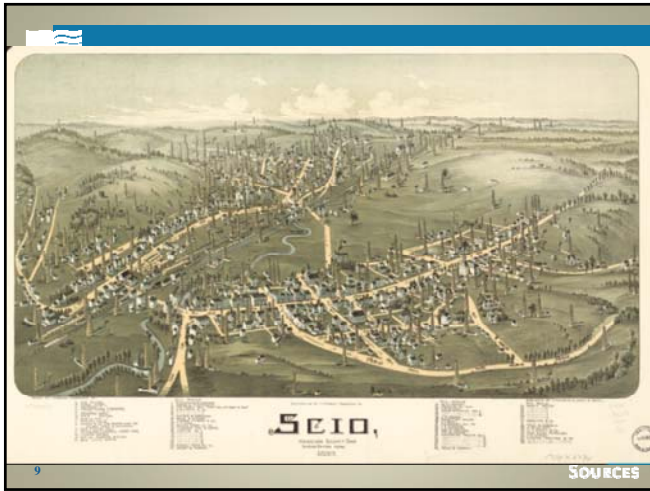
Observe: What do you see?
Reflect: What do you think?
Question: What do you wonder about?

LIBRARY OF CONGRESS
TEACHING WITH PRIMARY SOURCES

Consider purpose and audience.

"I think _____
(hypothesis – What is the purpose of this map?)
because _____."
(Details from the map or prior knowledge to support your hypothesis)






Critical Thinking

- Your hypothesis was based on evidence and/or prior knowledge.
- Would additional information help your critical thinking?

12


TEACHING
SOURCES



- Review new information
- Has your hypothesis changed?

13

LIBRARY OF CONGRESS
TEACHING
& PRIMARY
SOURCES




Map Analysis

- The Bibliographic record may give us even more information. These records tell us a title, creator, date, size, if there are copyright restrictions. Etc.
- Is this information helpful?

14

LIBRARY OF CONGRESS
TEACHING
& PRIMARY
SOURCES




Map Analysis

- Find the envelope on your table that says 1st in upper right corner.

15

LIBRARY OF CONGRESS
TEACHING
& PRIMARY
SOURCES



Map Analysis

- Select a map piece from the envelope.
- Select a map new to you.
- Work individually.
- Fill our your analysis form:
Observe, Reflect Question

16

LIBRARY OF CONGRESS
TEACHING
& PRIMARY
SOURCES



Consider the purpose of this map. In the further investigations section, complete this sentence:

“I think _____

(hypothesis – What is the purpose of this map?)

because _____.”

(Details from the map or prior knowledge to support your hypothesis)



17

Use sticky tab to point to one significant detail on your map piece that supports your hypothesis.



Next Steps...

1. Move to find others with pieces from your map.
2. Do not assemble the map
3. Place your maps face down
4. Take turns showing your map to the group.
5. Each person will:
 - Share your piece of the map.
 - Share your hypothesis about the purpose of the map.



19



Revisit and Revise

“I used to think _____

(original hypothesis);

now I think _____


(new hypothesis)

because _____.”

(evidence to support new hypothesis)



20




After everyone has shared and completed their revised statement, THEN assemble your map. (There may be a few missing pieces.)

Discuss what you observe, reflect, question and revisit your primary source analysis tool.

21


LIBRARY OF CONGRESS
TEACHING
AND PRIMARY
SOURCES



- Look for an envelope with extra pieces.

22

LIBRARY OF CONGRESS
TEACHING
AND PRIMARY
SOURCES




Discussion

How did your thinking about the purpose of the map change as you learned more information from the other map pieces?

23

LIBRARY OF CONGRESS
TEACHING
AND PRIMARY
SOURCES




Create a Headline for your Map

Write a headline for this map that captures the most important aspect that should be remembered.

24


LIBRARY OF CONGRESS
TEACHING
AND PRIMARY
SOURCES



- After you have completed your headline, ask for the final pieces and bibliographic record for your map.

25


LIBRARY OF CONGRESS
TEACHING
AND PRIMARY
SOURCES




- How could you integrate reading and writing with a map analysis?
—Share ideas

26

LIBRARY OF CONGRESS
TEACHING
AND PRIMARY
SOURCES



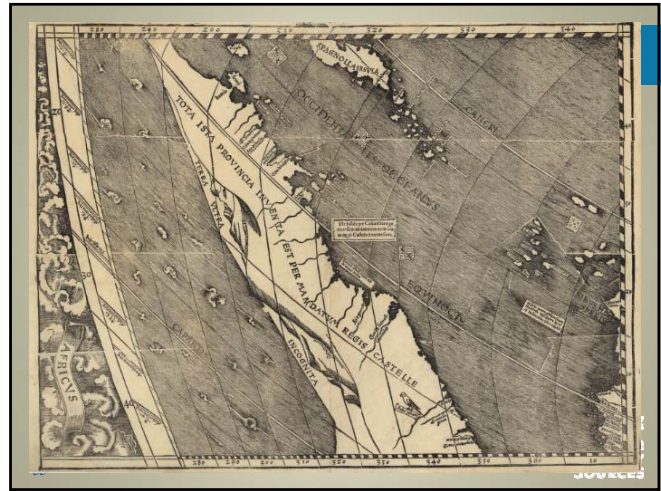
Waldseemüller Map 1507



27

LIBRARY OF CONGRESS
TEACHING
AND PRIMARY
SOURCES







Drake West Indian Voyage: St. Augustine



TEACHING
PRIMARY
SOURCES

Drake West Indian Voyage: Entire Trip



TEACHING
PRIMARY
SOURCES

Map of Missouri River



LIBRARY OF
CONGRESS
TEACHING
& PRIMARY
SOURCES

42

Lewis and Clark map with annotations



LIBRARY OF
CONGRESS
TEACHING
& PRIMARY
SOURCES

43

Diagram of the south part of Shaker Village



LIBRARY OF
CONGRESS
TEACHING
& PRIMARY
SOURCES

44

Auswanderer-karte



LIBRARY OF
CONGRESS
TEACHING
& PRIMARY
SOURCES

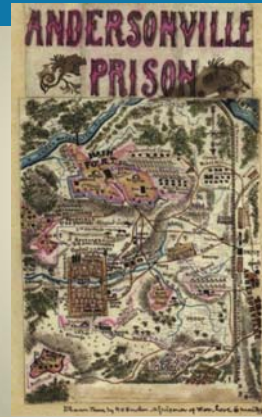
45

Map of the U.S. west of Mississippi



46

Andersonville Prison



47

LIBRARY OF
CONGRESS
TEACHING
AND PRIMARY
SOURCES

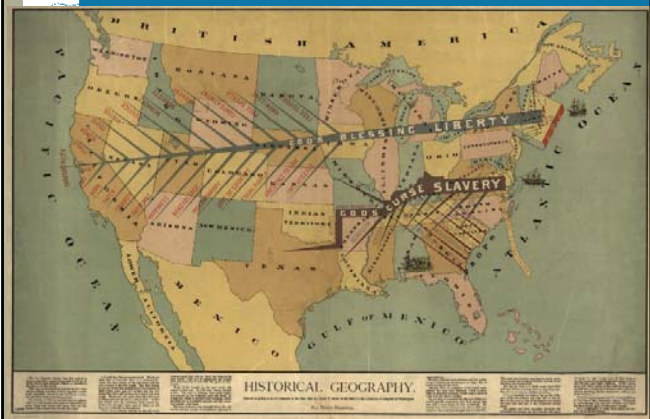
New map of Texas, Oregon and California



48

LIBRARY OF
CONGRESS
TEACHING
AND PRIMARY
SOURCES

Historical Geography



Outline of post-war new world map



50

Visible Thinking Routines

- Sticky notes
- I think ____ because
- "I used to think... but now I think..."
- Headlines
- "What makes you say that?"
- See-Think-Wonder
 - Harvard Project Zero: making Thinking Visible

51

LIBRARY OF CONGRESS
TEACHING
AND PRIMARY
SOURCES

Discussion

Think about how the strategies of visible thinking apply to the analysis of primary sources.

How did the incorporation of visible thinking strategies help build critical thinking skills?

52

LIBRARY OF CONGRESS
TEACHING
AND PRIMARY
SOURCES

- **Comments?**
- **Questions?**

53

LIBRARY OF CONGRESS
TEACHING
AND PRIMARY
SOURCES



Search map collections

■ **Loc.gov/maps**

54

LIBRARY OF CONGRESS
TEACHING
2ND PRIMARY
SOURCES